

**FOUR HANDLED LIDDED JAR**

1991

Salt glaze, blue glass runs from  
four handles, wood-fired stoneware

H: 21 in.

Collection of Lee and Edith Calhoun

**UMBRELLA STAND**

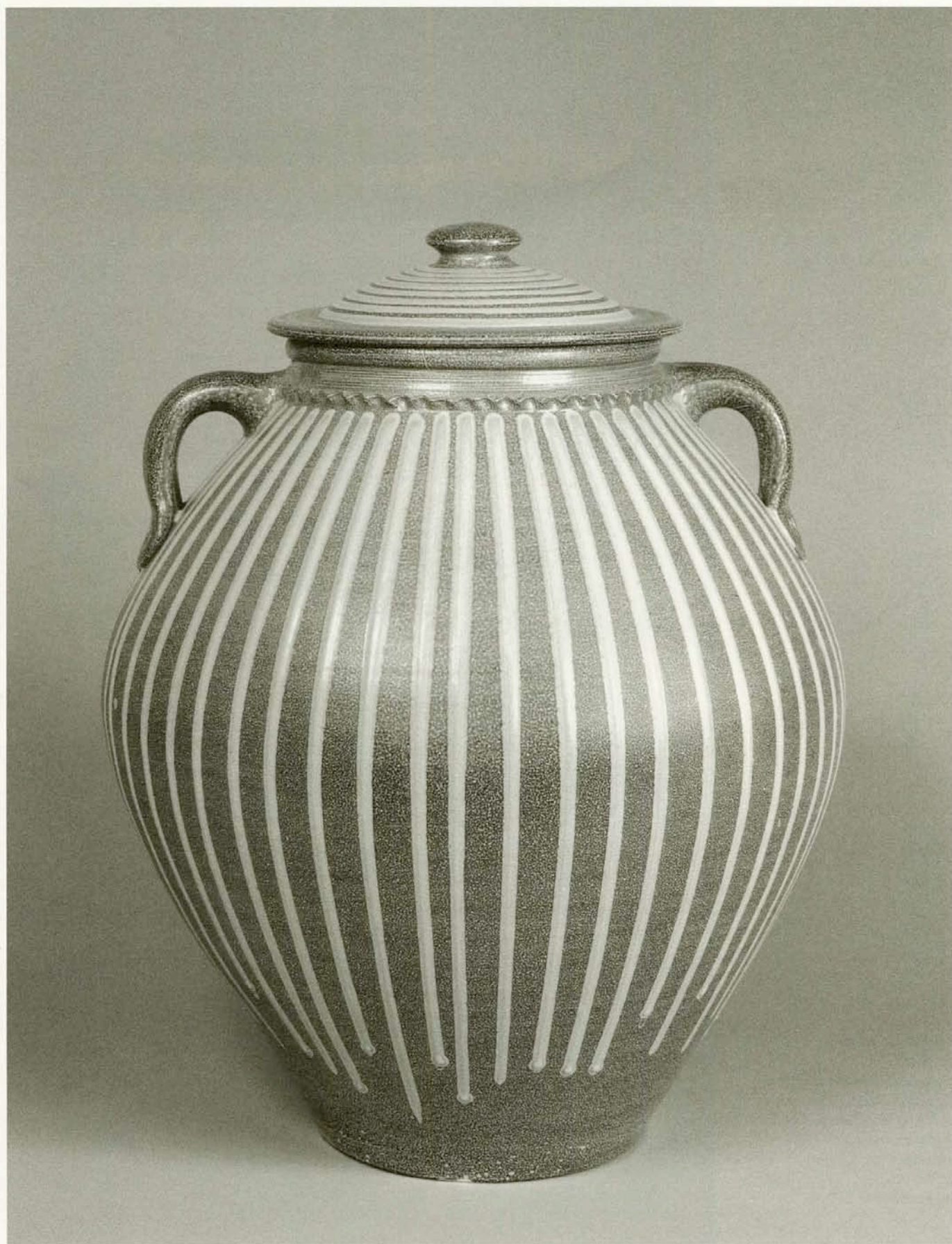
1996

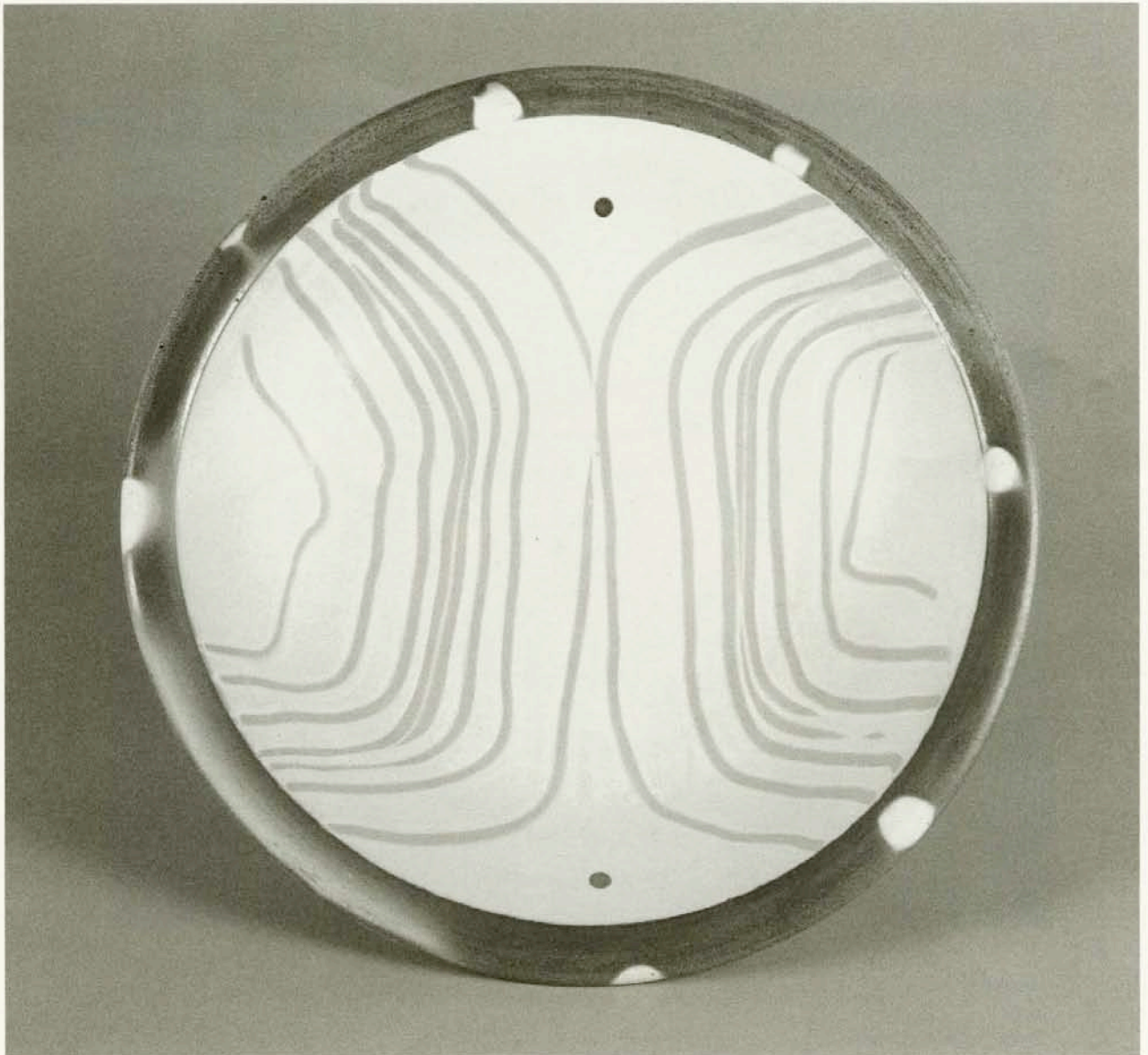
Iron slip wash overlaid with white  
ball clay slip circles, manganese  
dots, "Local Area Celadon" glaze,  
blue glass runs, wood-fired  
stoneware

H: 30 in.

Private collection







# **PLATTER**

1994

Double handed finger wiping  
through Shino glaze, wood-fired  
stoneware

D: 22  $\frac{3}{4}$  in.

Collection of Brandon Holland

# **TWO HANDLED LIDDED JAR**

1993

Salt glaze, vertical celadon drips,  
wood-fired stoneware

H: 27  $\frac{1}{2}$  in.

Collection of Pamela Bayne



# **TEAPOT**

1996

White tin glaze, clustered iron  
and manganese dot decoration,  
wood-fired stoneware

H: 6 in.

Private collection

# **VASE**

1996

Manganese slip glaze, medallions,  
glass runs, wood-fired stoneware  
H: 21 in.

Collection of Brandon Holland



*Left to Right:*

**VASE**

1997

Celadon glaze over iron slip wash and white slip vertical lines on body; salt glaze, impressed chrysanthemum medallions on neck, wood-fired stoneware

H: 32 in.

Private collection

**TWO HANDLED LIDDED JAR**

1996

Iron clay slip wash under white slip stripes, covered with "Local Area Celadon" glaze, wood-fire stoneware

H: 39 in.

Collection of Gaillard F. Ravenel II and Frances P. Smyth

**BOTTLE**

1996

Iron clay wash under white slip stripes covered with "Local Area Celadon," incised horizontal bands on neck, wood-fired stoneware

H: 34  $\frac{3}{8}$  in.

Collection of Ackland Art Museum, The University of North Carolina at Chapel Hill, gift of Charles Millard in memory of Gaillard F. Ravenel II







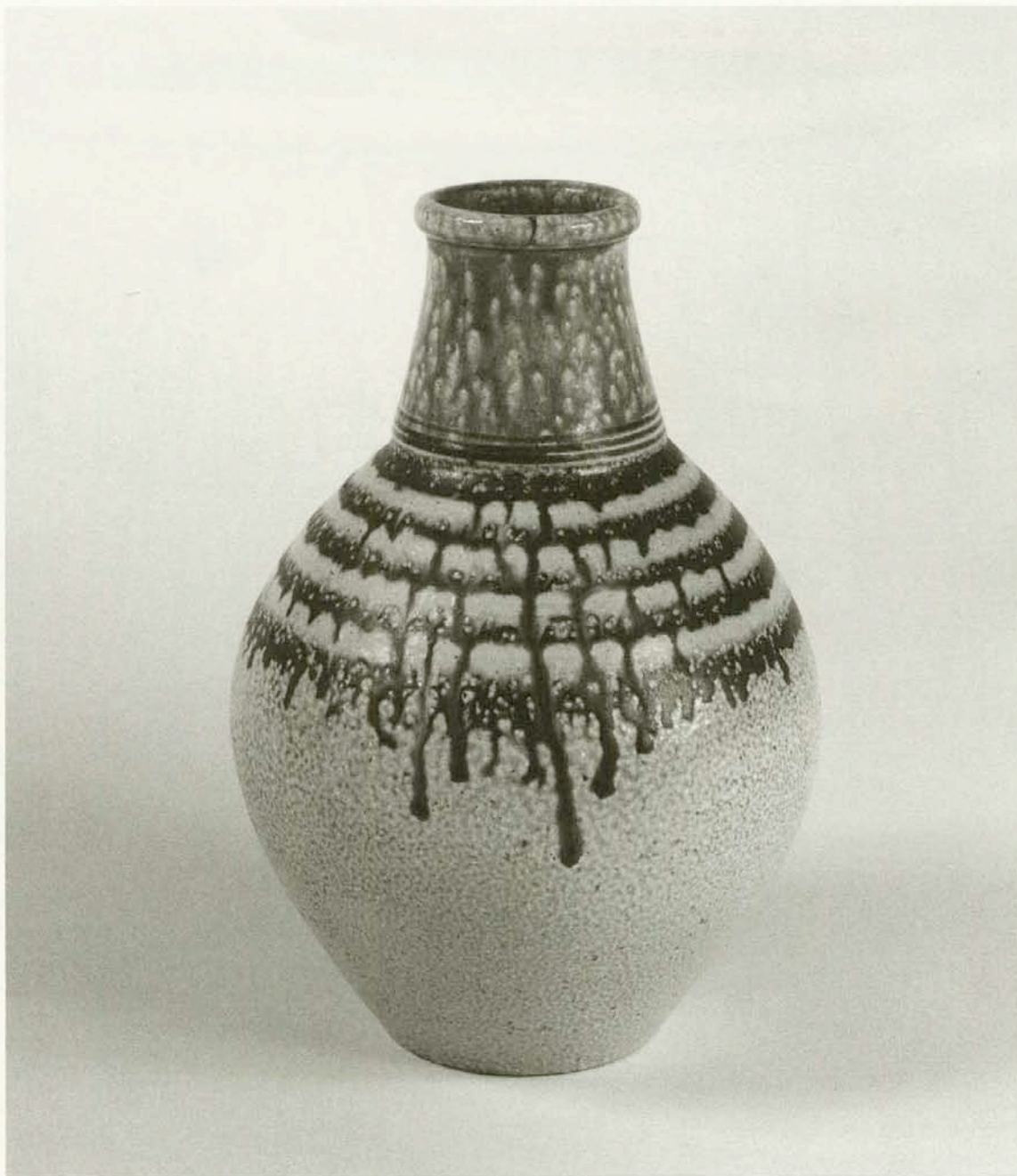
**PLANTER**

1996

Salt glaze, kaolin slip banding,  
celadon dots, crimped collar,  
wood-fired stoneware

H: 12 in.

Private collection



**VASE**

1995

Alkaline glaze on neck; salt glaze,  
manganese black slip and celadon  
glaze banding on body, wood-fired  
stoneware

H: 11  $\frac{3}{8}$  in.

Collection of James J. Lally





**FISH PLATTER**

1996

Heavy salt glaze, ember charring, blue glass pool over chrysanthemum stamps, wood-fired stoneware

L: 29 in.

Collection of Annette and Charles Kahn

**HO, HO, HO**

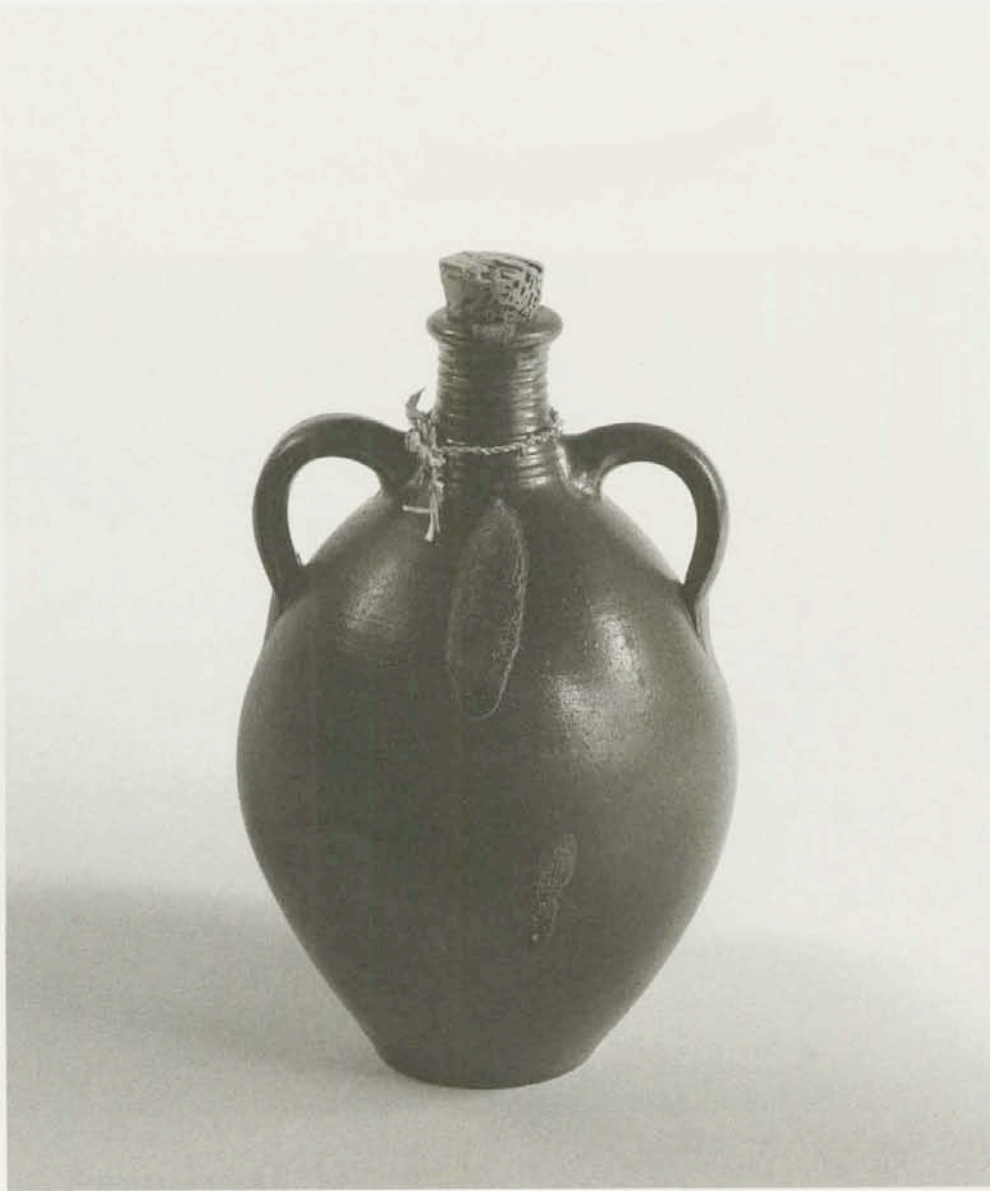
Planter

1995

Alkaline glaze, medallions, blue glass runs, wood-fired stoneware

H: 30 in.

Private collection



#### **HAW RIVER FESTIVAL JUG**

1990

This two handled ceremonial jug is used to carry water from the spring at the headwaters of the Haw River to the confluence of the Haw and Deep Rivers where the water is emptied at the end of each annual festival.

Salt glaze, blue glass runs, wood-fired stoneware

H: 12 in.

Collection of the Haw River Festival

#### **GRAVE MARKER FOR HAL KOME**

1996

Salt glaze, pierced manganese slip dome; incised inscription and poetry through kaolin slip on body, wood-fired stoneware

H: 43 in.

Private collection

